

History of GYNECARE THERMACHOICE: Balloon Improvements



First Generation

- Dip-molded
- Latex
- Non-circulating



Second Generation

- Injection-molded
- Silicone
- Circulating



Third Generation

- Double dip-molded
- Conforming
- Silicone
- Circulating

GYNECARE
THERMACHOICE

GYNECARE THERMACHOICE III Uterine Balloon Therapy System

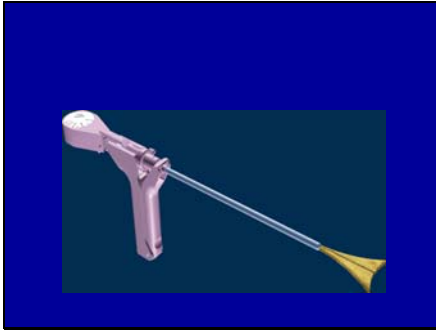


1. Extrapolated Uteri Data on File at ETHICON, INC.

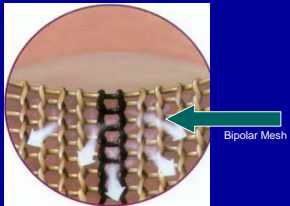
GYNECARE
THERMACHOICE

Novasure

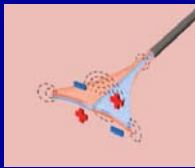




Novasure

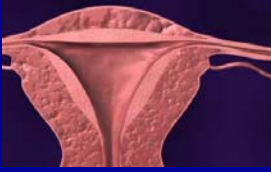


Novasure



Investigational in the United States

Steps of the NovaSure™ Procedure



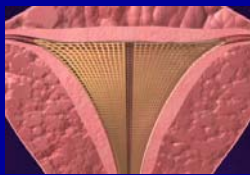
1. A slender wand is inserted through the cervix into the uterus

Steps of the NovaSure™ Procedure



2. A mesh device expands to conform to the uterine cavity

Steps of the NovaSure™ Procedure



3. Electrical energy is then delivered into the uterus for an average of 90 seconds

Steps of the NovaSure™ Procedure



4. Mesh device is retracted back into the wand and removed